

SECTION B-B

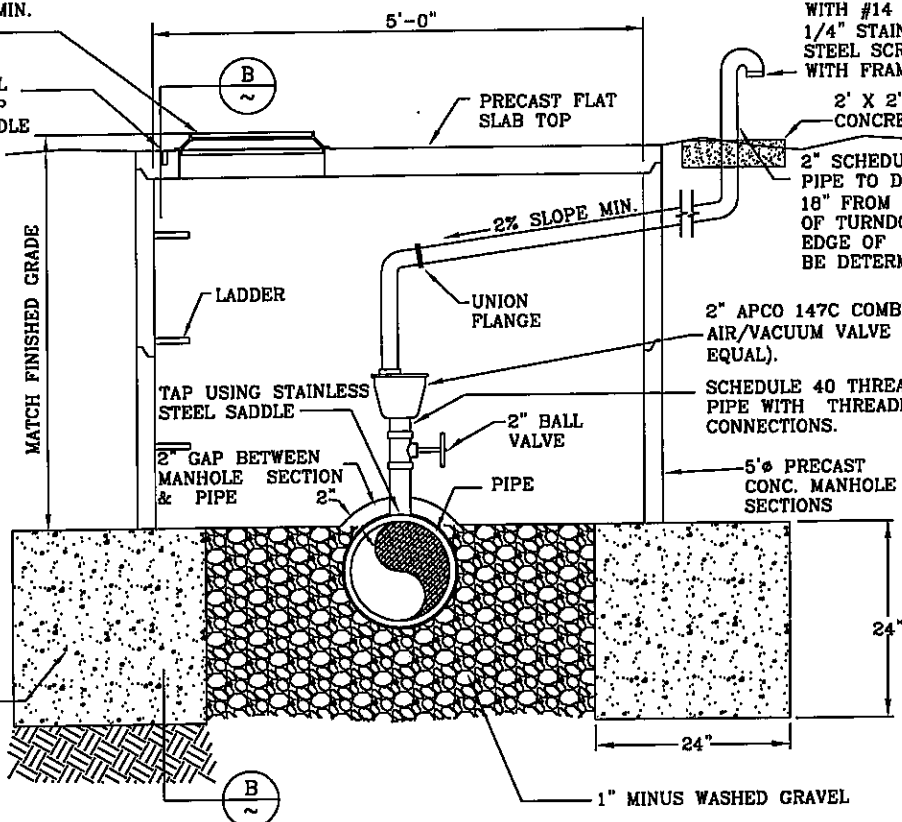
VENTED MANHOLE FRAME & COVER W/24" LID COMBINED WEIGHT 360 LBS. MIN. (HS-70 RATING)

CONTRACTOR TO DRILL 2-1" Ø HOLES 4" DEEP FOR REMOVABLE HANDLE TO BE USED FOR MANHOLE ACCESS.

COVER TURNDOWN WITH #14 AND 1/4" STAINLESS STEEL SCREENS WITH FRAME.

2' X 2' X 4" THICK CONCRETE PAD

2" SCHEDULE 80 PVC PIPING. PIPE TO DAYLIGHT MINIMUM OF 18" FROM CONCRETE PAD TO TOP OF TURNDOWN. EXTEND BEYOND EDGE OF ROADWAY LOCATION TO BE DETERMINED BY ENGINEER.



AIR VALVE SECTION N.T.S.

NOTE: ALL AIR VALVES SHALL BE INSTALLED VERTICALLY PLUMB

CITY OF ST. GEORGE ENGINEERING DEPARTMENT

REVISIONS		
DATE	DESCRIPTION	BY

# STANDARD AIR VAC DETAIL

STANDARD DWG. NO.	
316	1 OF 1
APPROVED:	
DATE:	BY: GM