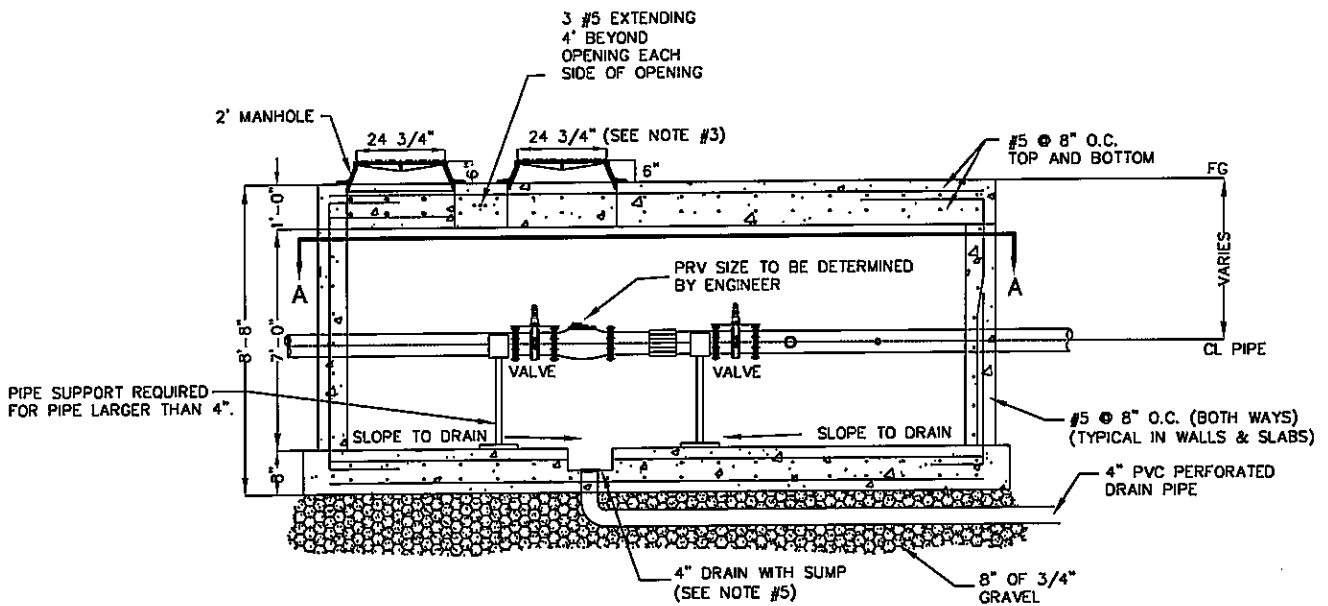


SECTION A-A



SIDE VIEW

NOTES:

1. IF VAULT IS IN SIDEWALK THE FINISH GRADE OF TOP OF VAULT SHALL MATCH SLOPE OF EXISTING SIDEWALK.
2. ALL FITTINGS SHALL BE FLANGED AND MEGA LUGGED.
3. MANHOLE RING & LID WILL VARY WITH SIZE OF P.R.V. CONTACT WATER DEPARTMENT.
4. IF VAULT IS IN ROADWAY, FINISH GRADE OF TOP OF VAULT SHALL MATCH SUBGRADE.
5. SUMP SIZE SHALL BE 12" X 12" X 4" DEEP.

CITY OF ST. GEORGE ENGINEERING DEPARTMENT

REVISIONS		
DATE	DESCRIPTION	BY

**STANDARD PRESSURE REDUCING VALVE
& VALUT FOR NEW CONSTRUCTION**

STANDARD DWG. NO.	
315	1 OF 2
APPROVED:	
DATE:	BY: GM