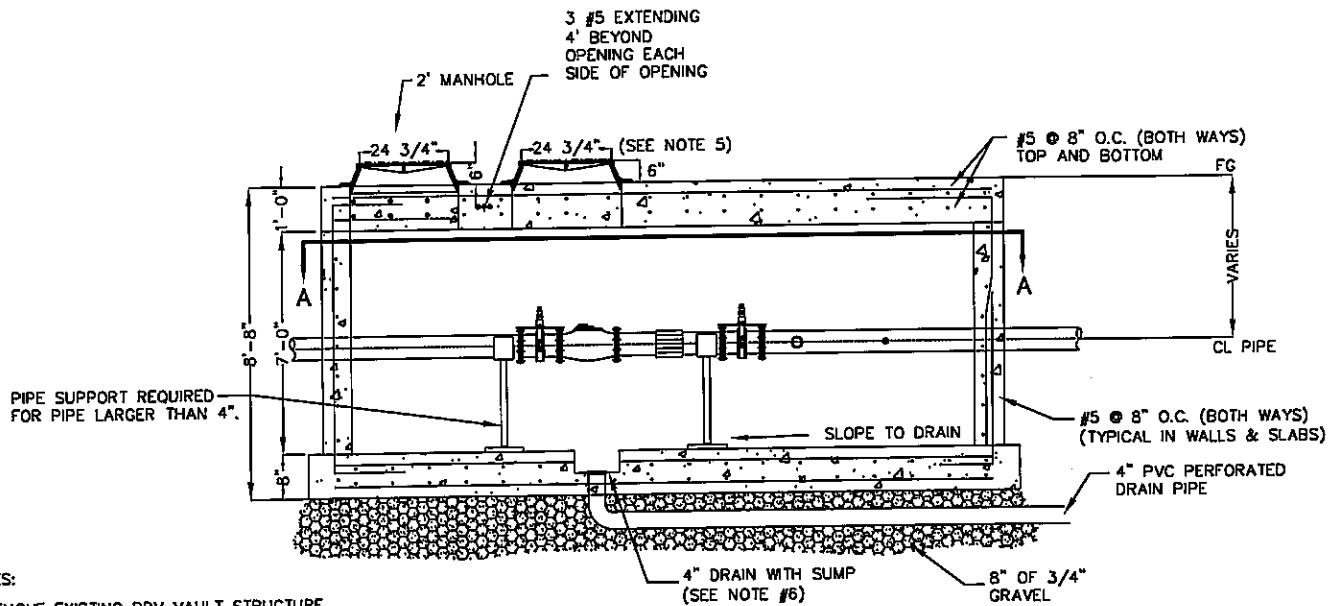


SECTION A-A



SIDE VIEW

NOTES:

1. REMOVE EXISTING PRV VAULT STRUCTURE.
2. FIELD VERIFY EXISTING PIPING CONFIGURATION & SIZES TO DETERMINE KNOCKOUT AND MANHOLE LOCATIONS.
3. IF VAULT IS IN SIDEWALK THE FINISH GRADE OF TOP OF VAULT SHALL MATCH SLOPE OF EXISTING SIDEWALK.
4. IF VAULT IS IN ROADWAY, FINISH GRADE OF TOP OF VAULT SHALL MATCH SUBGRADE.
5. MANHOLE RING & LID WILL VARY WITH SIZE OF P.R.V. CONTACT WATER DEPARTMENT.
6. SUMP SIZE SHALL BE 12" X 12" X 4" DEEP.

CITY OF ST. GEORGE ENGINEERING DEPARTMENT

REVISIONS		
DATE	DESCRIPTION	BY

**STANDARD PRESSURE REDUCING VALVE
FOR EXISTING PRV & PIPING**

STANDARD DWG. NO.	
314	1 OF 2
APPROVED:	
DATE:	BY: GM