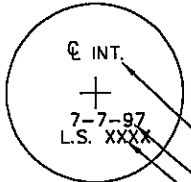
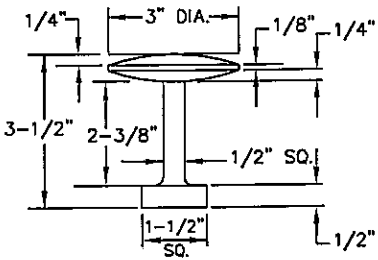


BRASS MARKER



ABBREVIATIONS, SEE NOTE #7
 DATE CAP IS MARKED.
 LICENSE NO. OF LAND SURVEYOR MARKING CAP.

NOTES:

1. ALL REFERENCE POINTS SHALL BE SET AT EQUAL DISTANCES FROM MONUMENT POINT.
2. CIRCULAR ASPHALT CUTS ONLY. (NO HEXAGONAL OR SQUARE CUTS)
3. MAKE CIRCULAR CUT EDGES AS SMOOTH AS POSSIBLE.
4. DIMENSIONS SHOWN FOR BRASS MARKER ARE THE MINIMUM.
5. BRASS MARKER SHALL BE A MODEL NO. K-9684, AS MANUFACTURED BY D & L FOUNDRY & SUPPLY OR APPROVED EQUAL.
6. LAND SURVEYOR LICENSE NUMBER SHALL BE STAMPED IN THE BRASS MONUMENT. (MIN. SIZE 1/4 LETTERS)
7. SEE CITY SURVEYOR FOR LIST OF COMMONLY USED ABBREVIATIONS.
8. CONCRETE SURFACE SHALL HAVE A MEDIUM BROOM FINISH.
9. CONCRETE SURFACE SHALL BE 1/8"-1/4" LOWER THAN THE EXISTING ROAD SURFACE.
10. ALL EXCESS CONCRETE SHALL BE REMOVED FROM MONUMENT WELL.

CITY OF ST. GEORGE ENGINEERING DEPARTMENT

**CLASS I STANDARD MONUMENT
 DETAILS**

REVISIONS		
DATE	DESCRIPTION	BY
9/02	REVISED CAP	LLB

STANDARD DWG. NO.	
160	1 OF 1
APPROVED:	
DATE:	BY: LBB