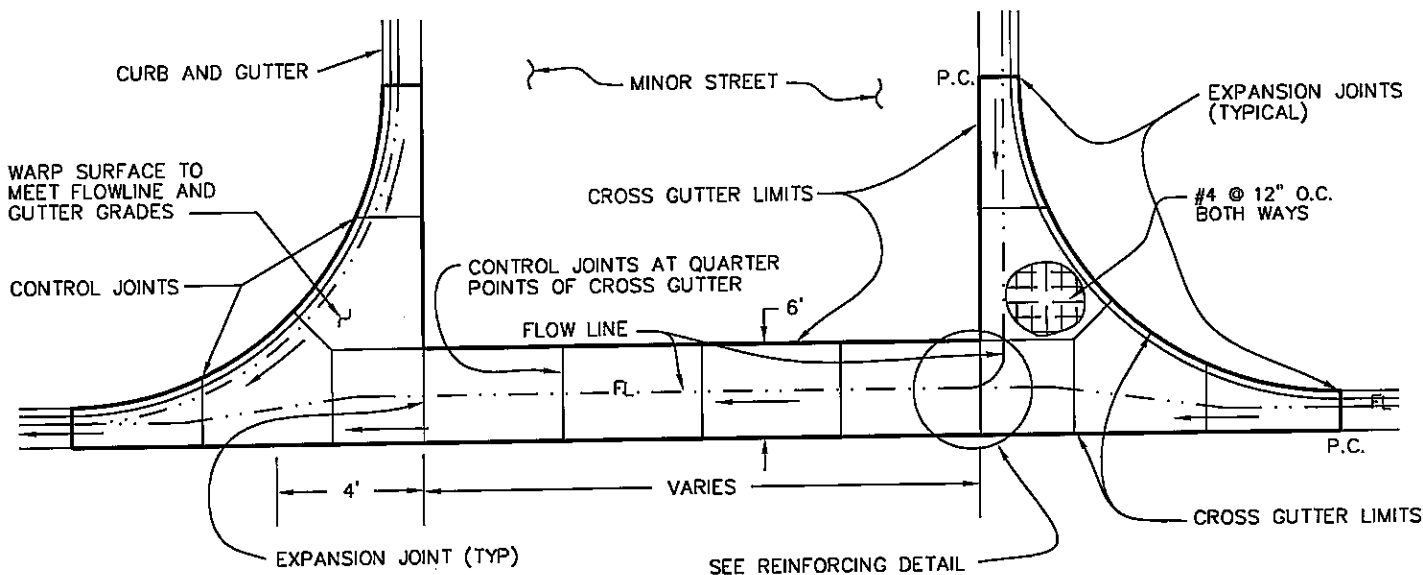


6' CROSS SECTION

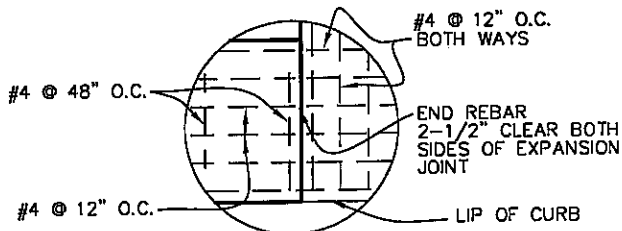
UNTREATED ROAD BASE
THICKNESS AS REQUIRED
(MIN 8") COMPACTED
TO 95%.



PLAN

NOTES:

- 1- FOR USE ON RESIDENTIAL & COMMERCIAL STREETS.
- 2- CROSS GUTTERS ARE USED AT INTERSECTIONS ONLY UNLESS OTHERWISE APPROVED.
- 3- CROSS GUTTER SHALL CROSS THE MINOR STREET.
- 4- ALL REINFORCING STEEL SHALL HAVE 2-INCH MINIMUM CLEAR COVER. SUPPORT CHAIRS, BLOCKS OR OTHER APPROVED EQUAL SHALL BE USED TO RAISE STEEL OFF GROUND.
- 5- REINFORCING TO EXTEND TO LIMITS OF CROSS GUTTER.
- 6- ALL REINFORCING STEEL SHALL BE GRADE 60 ASTM A 615.



REINFORCING DETAIL

CITY OF ST. GEORGE ENGINEERING DEPARTMENT

REVISIONS		
DATE	DESCRIPTION	BY

STANDARD 6' CROSS GUTTER

STANDARD DWG. NO.	
151	1 OF 1
APPROVED:	
DATE:	BY: LBB