

INTRODUCTION

Chapter 1

The City of St. George Parks Master Plan (1994) resulted in the successful election of an \$18 million dollar general obligation bond devoted to the development of park and recreation facilities, including trails. Bond monies were used to develop ten neighborhood parks, acquire future park sites, build additional softball and baseball facilities, develop a year-round swimming facility, improve school facilities used for recreation programming, and to add trails to the city-wide system. These very impressive accomplishments have given the city incentive and vision to move forward with this 2006 Parks, Recreation, Arts, and Trails Master Plan Update.

Resident Involvement in the Planning Process

City of St. George residents participated in the development of the Plan in several ways.

- A Steering Committee was formed, made-up of nine representatives of the Community including sports and recreation interests, arts interests, health care representatives, business leaders, a representative from the Latino community, and members of the Planning Commission and the City Council. The Steering Committee also involved St. George City staff from the Leisure Service Department and Community Development Department.
- Six Focus Groups met to identify specific interest group issues. The focus groups represented the arts, recreation interests, trails enthusiasts, soccer interests, Leisure Services Staff, and members of the Latino community. Summarized comments from the focus groups are included in a separate Appendix document.
- A Public Scoping Open House was held early in the process to help identify issues to be addressed in the Plan. The meeting was held at City Hall on February 15, 2006. Comments received during the meeting, and those received by email or mail after the meetings, are summarized and included in a separate Appendix document.
- Community Needs Survey was completed in May 2006. Residents throughout the City were asked to provide their comments and view on parks, recreation programs and facilities, arts programs and facilities, and trails.
- A briefing before the City Council was held in August 2006.
- A briefing before the Planning Commission was held in September 2006.
- A Public Hearing before the City Council was held on October 19, 2006.



Community Profile

The City of St. George is Washington County's government center. It was incorporated in 1862, and has grown into a center for business activity in southern Utah. The City's mild climate and picturesque setting are attractive to a growing population and thriving economy. Located between two major metropolitan areas and airports -- Las Vegas, Nevada is approximately 120 miles southwest, and Salt Lake City is about 310 miles north -- giving St. George easy access to major markets in the western United States.

Population

According to the U.S. Census Bureau, growth in St. George and Washington County qualifies it as the "nation's second-fastest-growing metropolitan area -- second only to Greeley, Colorado."¹ From 1990 to 2000, the city's population increased by nearly 75 percent (the entire population of Utah, by contrast, increased by approximately 30 percent during this same time period). A recent article in the *Salt Lake Tribune*, reported U.S. Census Bureau data announcing that Washington County was the fifth fastest growing county in the nation with growth of 7.7 percent between July 2004 and July 2005, accounting for 8,500 new residents.²

According to the U.S. Department of Housing and Urban Development, in-migration accounted for 80 percent of the City's population growth during this period, while the change from net natural increase (resident births minus resident deaths) accounted for the balance. More than 60 percent of in-migration for the decade occurred from 1991 to 1995 when a weak California economy brought many residents to the area.

While growth slowed somewhat during the second half of the 1990s, as shown by the number of building permits issued (see Table 1A), growth in the last few years in St. George has been explosive and steadily rising.

Future population growth is also projected to be strong, with anticipated growth rates of roughly five percent annually for the next fifteen years -- more than double the rate predicted statewide. Table 1B compares population in St. George, Washington County, and the State of Utah.

¹ Deseret News, "St. George Growth 2nd Fastest in U.S., September 22, 2005. Greeley is located 60 miles north of Denver and had a growth rate of 16.8 percent; Las Vegas ranked third with a growth rate of 14.6 percent. <http://deseretnews.com/dn/view/0,1249,610152931,00.html>

² Salt Lake Tribune, "Washington County growth still strong, but a bit slower", March 16, 2006. Flagler County, Florida expanded by 10.7 percent.



Table 1A – Residential Building Permits Issued in St. George, 1991 – 2004

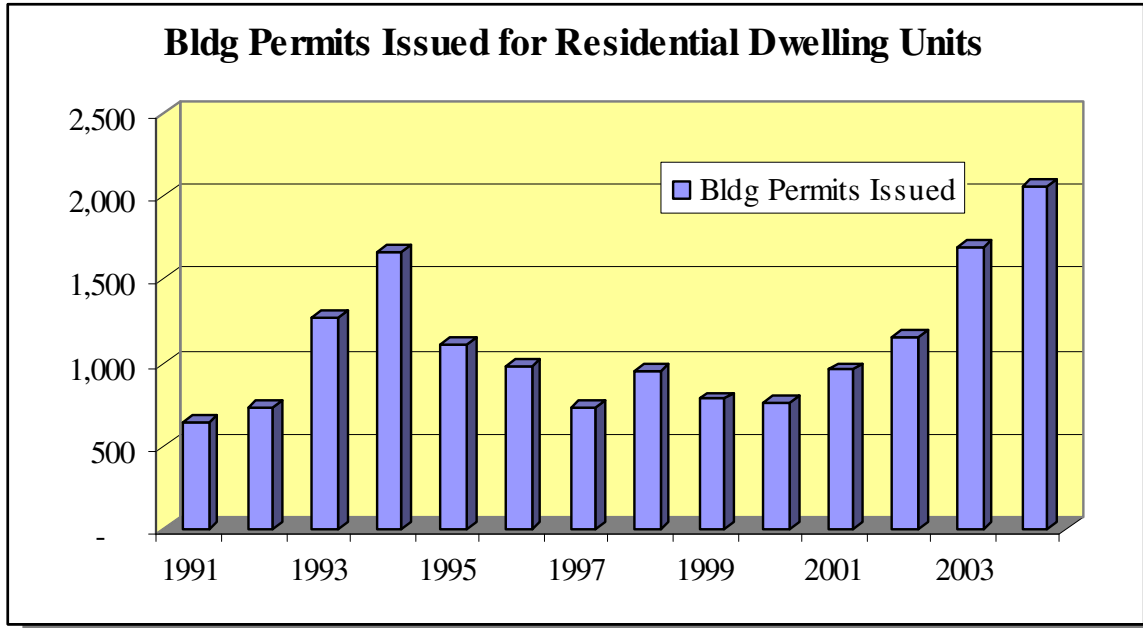


Table 1B – Population Growth Comparisons

POPULATION GROWTH Historical and Projected			
	St. George City	Washington County	State of Utah
Population 1990	28,502	48,560	1,722,850
Population 2000	49,663	90,354	2,233,169
Population 2005	65,968	125,010	2,528,926
Projected population 2010	85,644	162,544	2,833,337
Projected population 2020	132,497	251,896	3,486,218
Average annual growth rate 1990-2000	5.47%	6.41%	2.63%
Average annual growth rate 2000-2005	5.84%	6.71%	2.52%
Average annual growth rate 2005-2010	5.36%	5.39%	2.3%
Average annual growth rate 2010-2020	4.46%	4.48%	2.1%

Source: <http://www.governor.utah.gov/dea/05BaselineCityProj.xls>; United States Census 2000.

USA Today reports that Utah is currently the fifth fastest growing state in the United States and is expected to be so through at least 2010. According to the City of St. George 2005 Comprehensive Annual Financial Report (CAFR), Washington County currently accounts for over 50 percent of the total net in-migration to the entire state. The City of St. George, the largest municipality in Washington County and the tenth largest city in the State of Utah, accounts for approximately 55 percent of the County’s total population. The city estimates that build-out will occur by 2030 at a population of approximately 173,600.

This rapid growth is placing increased demands on the city’s parks, trails, recreation and arts facilities and programs. Using the growth rates shown above, Table 1C illustrates that the annual population growth in St. George is roughly 4,000 persons per year for the



next five years. St. George is projected to grow by another 22,281 persons between 2010 and 2015, and by 24,572 persons from 2015 to 2020. Table 1D shows the City's projected annual increase in population through build-out.

Table 1C – Population Increase by Year in St. George

POPULATION GROWTH BY YEAR, 2005 – 2010							
	2005	2006	2007	2008	2009	2010	Total 2006 – 2010
Population	65,968	69,831	73,675	77,552	81,548	85,644	NA
Increase in population (persons)	NA	3,863	3,844	3,877	3,996	4,096	19,676

Source: Five County Association of Governments; LYRB

Table 1D – City of St. George Population Projections – 2005 - 2030

Year	Population	% Increase	Year	Population	% Increase
2005	65,968	-	2018	122,668	4.17%
2006	69,831	5.86%	2019	127,583	4.01%
2007	73,675	5.50%	2020	132,497	3.85%
2008	77,552	5.26%	2021	136,617	3.11%
2009	81,548	5.15%	2022	140,737	3.02%
2010	85,644	5.02%	2023	144,857	2.93%
2011	90,100	5.20%	2024	148,977	2.84%
2012	94,556	4.95%	2025	153,097	2.77%
2013	99,013	4.71%	2026	157,217	2.69%
2014	103,469	4.50%	2027	161,337	2.62%
2015	107,925	4.31%	2028	165,457	2.55%
2016	112,839	4.55%	2029	169,577	2.49%
2017	117,754	4.36%	2030	173,697	2.43%

Source: Five County Association of Governments.

Second Home Ownership and Population

In addition to the population projections already cited, the number of second-home owners is also growing. The population of second-home owners is not reflected in the area population projections, thus understating actual demand for parks, trails, recreation and arts facilities, and programs. Based on interviews with local developers and real estate agents, it is estimated that roughly 15 percent of homes are second homes (some developers are estimating as high as 80-85 percent second home ownership), with projections that this percentage will increase in the future.



According to the city's Community Development Department, the majority of second homes are being built by retirees who are attracted to the region's temperate climate. By the end of the 1990s, the St. George and Zion National Park areas of Washington County were rated among the best communities in the country to retire by Rand-McNally, Prentice Hall, *Money*, and the American Association of Retired People (AARP). Snowbirds from northern Utah and other colder areas relocate to the St. George area during the winter months, and more and more retirees are purchasing vacation (second) homes in the area. According to the U.S. Department of Housing and Urban Development, the county's population increases by approximately 20,000 people during the winter months as second homes fill with part-time residents.

Dixie State College and Population

Also contributing to population and economic growth is the presence and growth of Dixie State College (DSC). Enrollment at DSC continues to climb and is up by 24 percent over the past five years; it is expected to reach 10,000 during fall and winter semesters.

In 2000, the two-year college expanded its curriculum by offering four-year bachelor's degrees in several program areas. This expansion helped attract more students seeking degrees full-time, which impacted the housing market to a greater extent than the typical part-time student pursuing two-year associates' degrees. About 300 full-time, year-round faculty and staff work at the college, and another 500 are employed part-time during the academic year.

Household Characteristics

According to the 2000 Census, households in St. George include somewhat older persons, have fewer persons per household, and are less likely to have children living at home than the average household in Utah. The median age in St. George (31.4 years) is approximately four years older than the median age statewide (27.1 years), and the percentage of households with persons over the age of 65 is more than double the statewide average (see Table 1E).

Table 1E – Comparison of Household Characteristics

COMPARISON OF HOUSEHOLD CHARACTERISTICS			
	St. George City	Washington County	State of Utah
Median age	31.4 years	31.0 years	27.1 years
Percent of population over age 65	19.3%	17%	8.5%
Average household size	2.81 persons	2.97 persons	3.13 persons
Per capita income	\$17,022	\$15,873	\$18,185
Households with children under 18 years of age	34.2%	37.1%	42.7%
Source: United States Census 2000.			

While per capita incomes are slightly lower in St. George than in Utah, this is likely a reflection of the older population on retirement incomes, as well as the student population



at Dixie State College. Incomes in St. George average \$2,025 monthly, compared to \$2,641 statewide.³

Household size in St. George averages 2.81 persons, well below the State average and somewhat lower than the Washington County average. Household size is represented as an average across the entire City and does not account for areas like Sun River where residents are all over 55 years of age, with no children in the household. In Sun River and neighborhoods like it, average household size will likely include fewer individuals.

Tourism

Major tourist attractions in the area include Grand Canyon, Zion, and Bryce Canyon National Parks. These attractions and many others contribute to growth in the tourism sector of the economy. The city also plays host to many state and national tournaments that make use of the city's sports fields, tennis courts, and other recreation facilities. The St. George Marathon, the Senior Games, regional soccer, baseball, and softball tournaments, bicycle and running races, and golf are just a few of the major sports and leisure activities that attract crowds, fill hotel rooms, and contribute to the robust economy. As shown in Table 1F, tourism showed a substantial increase in just the past year, adding greatly to city and county revenues, but also placing demands on City resources, with increases in traffic congestion, and demand for facilities such as parks, trails, recreation and arts facilities, and programs.

Table 1F – Tourism Increases in Washington County

WASHINGTON COUNTY TRAVEL INDICATORS – 2004 TRAVEL PROFILES	
	Percent Increase From Previous Year
Local tax revenues from tourism spending	16.2%
Gross tax room rents	5.8%
Transient room tax	5.8%
Restaurant tax	5.9%
Car rental tax	24.7%
Source: 2004 State and County Travel and Economic Indicator Profiles, Utah Travel Council. http://travel.utah.gov/research_and_planning/economic_planning/documents/CountyProfiles2004PrintVersion.pdf	

Economic Growth

Economic growth and job opportunities continue to expand as more high-tech industries locate in Washington County. Growth in high-tech industries has provided more diversity in the local job market, changing from what has traditionally been a service-oriented industry. In fact, St. George currently has the highest job growth rate for all Utah cities at 10.7 percent, according to a Federal Deposit Insurance Corporation report as discussed in the City's 2005 Comprehensive Annual Financial Report (CAFR). Every major industry, including construction, manufacturing, health care, and retail, is creating employment opportunities in the City. Major employers in Washington County include Intermountain Health Care, WalMart, Dixie State College, SkyWest Airlines, Cross Creek Manor Residential Care, and Cabinetec.

³ Source: Dept. of Workforce Services



Looking to the future, the City continues to work on financial planning, land acquisition, and other issues related to construction of a new regional airport. The new airport is expected to enhance the area's desirability for business and residential locations, and should also increase tourism accessibility.

Housing and Land Prices

As rapid growth occurs, real estate prices have also increased substantially in the past year. In the 2005 second-quarter report from the Utah Association of Realtors, Washington County showed 868 home sales with home prices up 30.21 percent from the same period in 2004, at an average price of \$270,078. Condos, 261 of them, sold for an average price of \$151,528 – up 18.91 percent from the same period in 2004, and land prices increased an incredible 63.8 percent over the same time period.⁴

Summary

A rapidly increasing population, an older demographic, a mild climate and attractive outdoor recreation setting, a growing economy, and bulging land prices all contribute to the excitement and challenge facing St. George as it plans for the future of its parks, trails, and recreation and arts facilities and programs. This plan will look to the year 2016 – ten years into the future, when the population is expected to reach 112,839 persons. The Plan will use this population number as the basis for analyzing the need for parks and facilities, specifically in determining the need for park lands.

Summary of St. George Parks, Recreation, and Arts Survey Results

The survey was developed with the intent of assessing local perceptions and preferences for a wide range of recreation and arts options. It was mailed randomly to residents, businesses, and property owners in St. George in March and April 2006. 1,423 surveys were returned and tabulated, resulting in a ± 2.5 percent error margin at the 95 percent confidence level. A summary of survey results follows, and a copy of the survey instrument is included in the appendix. More information is contained in the individual chapters as they address aspects of the Master Plan. Survey responses were sorted and analyzed by the following categories:

- All respondents;
- Age of respondent;
- Student vs. non-student;
- Full-time vs. part-time resident;
- Own vs. rent;
- Length of time living in St. George;
- Age of children living at home; and
- Location within St. George.⁵

⁴ Source: <http://www.stgeorgechamber.com/Housing.htm>

⁵ Respondents were asked to identify their location based on a map that divided the City into 16 geographical areas.



Potential For Bias

Results of the survey have some inherent biases. Some apartment dwellers may not have received a survey, particularly if they do not receive utility billings. Those individuals with a high level of interest in park, recreation, and arts are more likely to respond, potentially overstating the degree of community support for those kinds of programs. Additionally, some bias could also have occurred depending on who in the household completed the survey, i.e. male, female, adult or teen.

Demographics of Survey Respondents

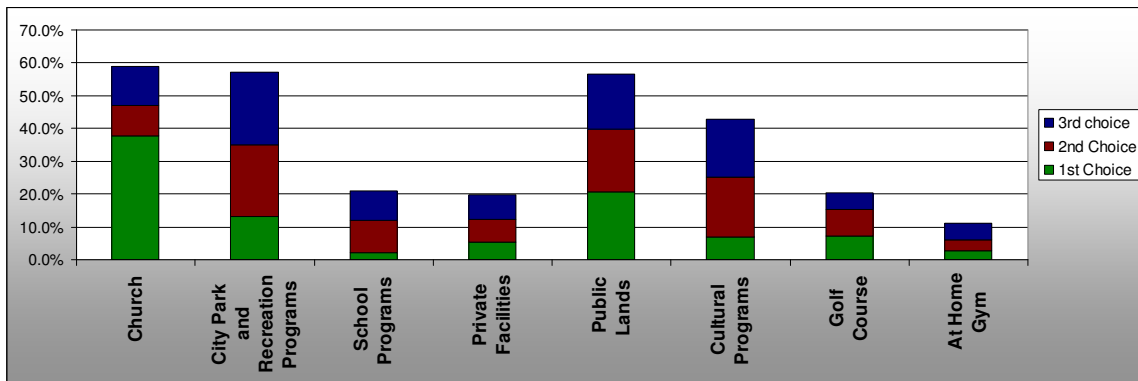
The demographics of survey respondents may be somewhat different from the demographics represented later in this chapter that were gathered during the 2000 Census. These demographics represent those individuals who participated in the survey and not the community as a whole.

- Approximately one-third of survey respondents are age 44 years or younger; one-third are ages 45 to 64 years; and one-third are age 65 and older.
- Seven percent are students; 93 percent are not.
- Ninety-four percent of respondents live in St. George year-round; six percent consider themselves part-time residents.
- Ninety percent of respondents own their place of residence, while ten percent rent.
- One-third of respondents have lived in St. George for five years or less (16 percent for two years or less, and another 16 percent for three to five years). Eighteen percent have lived in the city for six to ten years, making a total of 50 percent of respondents who have lived in the City for ten years or less. Roughly 22 percent of respondents have lived in the City for longer than 20 years.
- Over 61 percent of respondents do not have any children living at home, with roughly 20 percent of respondents having children in each of the following age categories: 0 to 5 years; 6 to 11 years; and 12 to 17 years.

How Leisure and Recreation Needs Are Met.

The single greatest source for meeting recreation needs is through churches, followed by city park/recreation programs and public lands (Forest Service, ski resorts, trails, BLM land, etc.).

Table 1G – Three Greatest Sources for Meeting Recreation Needs



City park and recreation programs are particularly popular among those aged 25 to 44 years, and are generally those with children living at home. Respondents age 65 and over are the least likely to participate in city parks and recreation programs.

Park Use

Parks that are most-used by respondents are listed below in descending order.

Table 1H – Most-Used Parks in the City of St. George

Worthen	63%	Slick Rock	8%
Tonaquint	36%	Petroglyph	8%
J.C. Snow	26%	Royal Oaks	6%
Bluff Street	25%	Christensen	5%
Pioneer	21%	Centennial	4%
Cox	18%	Larkspur	4%
Bloomington	18%	Middleton	4%
Mathis	18%	College	4%
2450 East	13%	Tawa Ponds	4%
Bloomington Hills N	11%	Sunset	4%
Bloomington Hills	10%	Black Hill View	4%
Canyons Complex	10%	1100 East	3%
Skyline Pond	10%	Springs	3%
Dixie Downs	9%	Blake Memorial	3%
Shadow Mountain	8%		

Nearly 42 percent of respondents use parks more than ten times per year. Park usage is highest in the younger age groups, and declines with age; only 23 percent of those aged 65 and over use parks more than ten times per year, in comparison with 73 percent of the 25 to 34 age group.

Eighty-two percent of respondents feel that it is important to have parks within walking distance (within ½ mile or ten minutes) of their neighborhood. Again, this viewpoint is highly influenced by age, with 98 percent of those ages 18 to 24 years desiring parks close to home, compared to 68 percent of those ages 65 and older. However, neighborhood parks are still extremely important to every age group, although slightly less important as age increases.

Use of Leisure Services' Programs and Facilities

The “top 10” activities most participated-in by respondents are as follows (listed in order of descending importance by percentage of respondents participating):

Table 1I – Activities Most Participated-In

Festivals and celebrations	51%
Outdoor concert series	35%
Art museum series	35%
Leisure swimming	27%
Nature programs	19%



Youth soccer	19%
Swimming lessons	14%
Youth baseball leagues	14%
Tennis	13%
Exercise/aerobics	13%

Varying interests are expressed by different age groups, with festivals and celebrations, followed by the outdoor concert series, having the most appeal to all age groups.

Table 1J – Most-Used Programs and Most Participated-In Activities by Age Groups

MOST-USED PROGRAMS AND ACTIVITIES BY AGE GROUPS		
Older Age Groups (55+)	Middle Age Groups (35-54)	Younger Age Groups (18-34)
Art museum events	Festivals and celebrations	Festivals and celebrations
Festivals and celebrations	Youth leagues – soccer	Exercise/aerobics
Outdoor concert series	Leisure swimming	Outdoor concert series
Nature programs	Outdoor concert series	

Table 1K - Facilities Used by More Than 25 Percent of Respondents

Sand Hollow Aquatic Center	52%	Arts Center	27%
Dinosaur Discovery Site	45%	Municipal Pool and Hydrotube	25%
Art Museum	38%	Tonaquint Nature Center	25%
Opera House/Social Hall	33%	Recreation Center	25%

Table 1L – Most-Used Facilities by Age Groups

MOST-USED FACILITIES BY AGE GROUPS		
Older Age Groups (55+)	Middle Age Groups (35-54)	Younger Age Groups (18-34)
Dinosaur Discovery Site	Sand Hollow Aquatic	Sand Hollow Aquatic Center
Art Museum	Municipal Pool and Hydrotube	Recreation Center
Opera House/Social Hall	Dinosaur Discovery Site	Sun Bowl
Arts Center	Recreation Center	Sand volleyball courts
Sand Hollow Aquatic	Tonaquint Nature Center	Dinosaur Discovery Site
Tonaquint Nature Center	Art Museum	Art Museum
	Sun Bowl	
	Opera House	
	Urban fishing ponds	

Those who do not participate in Leisure Services' programs and activities cite the following major reasons: participant age or disability (33 percent of all respondents – 57 percent of respondents aged 65 and over); are not interested in the activities and programs that are offered (21 percent); and, admission fees are too expensive (17 percent).



New Activities and Facilities Desired

Respondents were asked to list (open-ended question) the activities and facilities, not currently offered in St. George, that they most desire.

Table 1M – New Activities and Facilities Desired

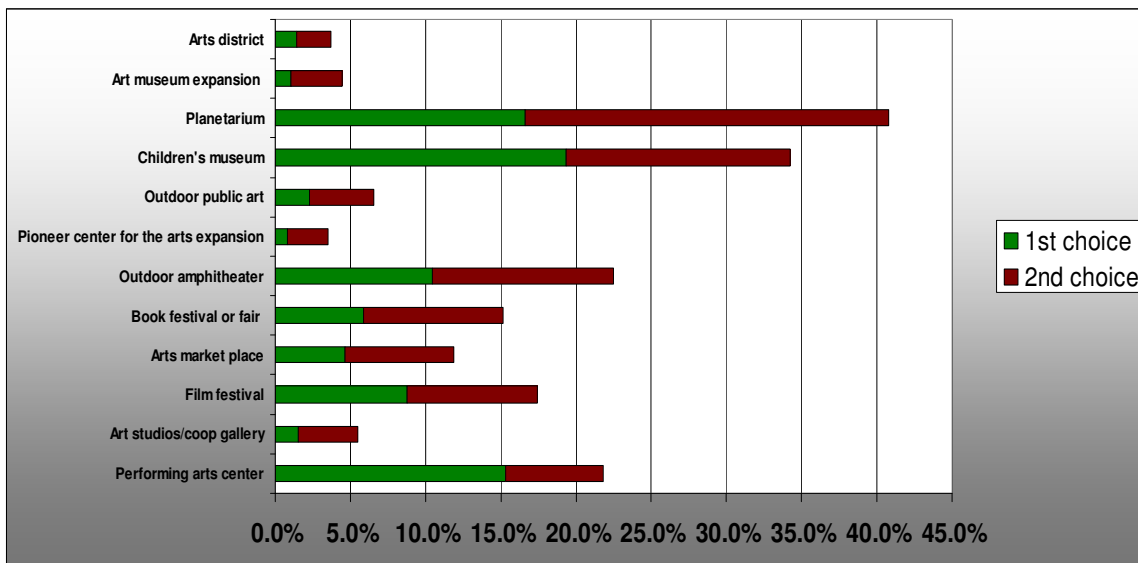
<i>Activities Desired</i>		<i>Facilities Desired</i>	
Trails	21%	Trails	29%
Theater/City Activities	21%	Sports	16%
Sports	17%	Repair parks/additional parks	16%
Classes	12%	Performing arts/recreation center	13%
Water Park	11%	Skating	11%
Shooting Range	10%	Water park	10%
		Pools	10%
		Dog parks	8%

Arts and Cultural Events

Appropriate uses for the Leisure Services Building (old Dixie Academy next to the library at 86 S. Main) include a children’s/science museum (31 percent); civic theater seating for concerts and plays (29 percent); community theater (23 percent); receptions and social event space (19 percent); art gallery (18 percent); and meeting room space (17 percent).

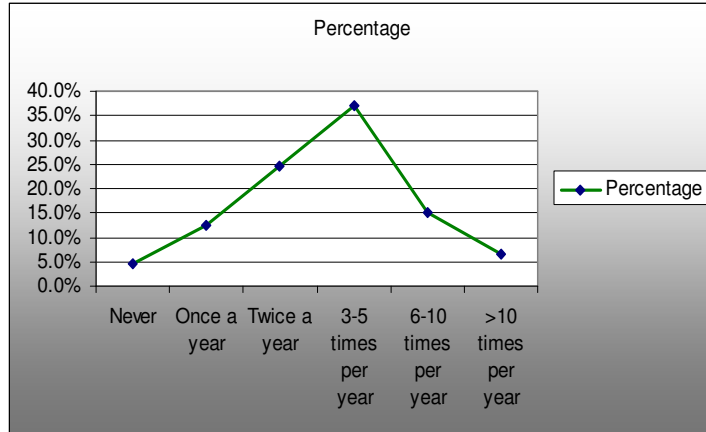
The planetarium and children’s museum were the most popular choices for potential arts venue expansion in St. George. However, there were distinct differences between age groups in terms of preferences for arts expansion. A children’s museum and planetarium were more popular among younger age groups, while a performing arts center was the most favored choice among older age groups.

Table 1N – First and Second Choice for Reuse of the Leisure Services Building



Attendance at arts-related activities does not differ significantly by age, with nearly two-thirds of respondents attending between two and five times per year.

Table 10 – Attendance at Arts Activities

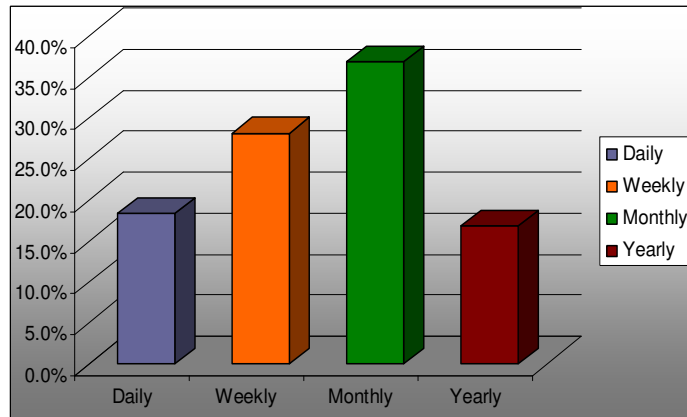


Trails

Of those who responded to the survey, 78 percent state that they use the existing trails system. Of these respondents, the majority use the trails on a monthly basis.

Over 88 percent of respondents use the trails for walking, jogging or hiking, followed by 52 percent who use trails for recreational bicycling. Only four percent use the trails for bicycle commuting, with only three percent using them for equestrian purposes.

Table 1P – Frequency of Trail System Use



Trail usage for walking, jogging and hiking purposes is spread fairly equally among all age groups. Recreational bicycle usage is highest in the middle age group (35-54 years of age).

The most-needed trail improvements are to connect gaps in the existing trail system (56 percent), followed by linking neighborhoods with the trail system (36 percent) and more lighting (24 percent). Fifty-four percent of respondents feel that asphalt surface trail miles should be increased. Sixty-four percent of the youngest age group state that the trails (asphalt surface) should be increased while only 44 percent of the 65 and over age group feel that this type of trail should be expanded. Only 15 percent of respondents feel that equestrian trails should be expanded.



Future Parks and Recreation Development

Nearly half of respondents (48 percent) feel that neighborhood parks should be expanded, with 37 percent desiring more linear parks along rivers. Respondents who are new to the community (having lived here two years or less) express a stronger desire to preserve open space, as compared to respondents who have lived here for longer periods of time. Part-time St. George residents (as opposed to year-round residents) also express substantially more interest in preserving open space and in creating linear parks along rivers.

Those facilities most desired in St. George, based on a rating scale of 1 to 7, with 1 meaning *unimportant* and 7 meaning *very important*, are shown below in order of descending importance by the mean score calculated from the survey.

Table 1Q – Most-Desired Facilities

Trails	5.0
Open space acquisition	4.8
Additional parks	4.7
Swimming pools	4.6
Recreation centers	4.4
Performing arts center	4.2
Sport fields	4.1
Visual arts center	4.0
Expanded arts museum	3.8
Dog parks	3.3
Skate parks	3.1

Summary

Overall, 82 percent of respondents feel that the Leisure Services Department is meeting the demands of the community – a very high satisfaction level. Not surprisingly, however, different demographic groups have varying recreation priorities. The following summarizes some of the major differences between demographic groups.



Table 1R – Summary of Characteristics of General Demographic Groups

Year-Round Resident	Part-Time Resident
Twice as likely to have recreational needs met through city programs	Three times as likely to have recreational needs met at the golf course
Twice as likely to participate in leisure swimming, swim lessons and youth leagues	Twice as likely not to use parks because of disability or age
Twice as likely to use the Municipal Pool and Hydrotube	Twice as likely to use walking/jogging paths
More likely to use the volleyball courts, skateboard parks, Sun Bowl and the Nature Center	Twice as likely to participate in tennis
More interested in increasing citywide Leisure Service's programs	2/3 want more trails, compared to 1/4 of year-round residents who want more trails
77% use trails	91% use trails
Twice as likely to want trail lighting	Twice as likely to want trail miles increased
Top priority for parkland is neighborhood parks	Top priority for parkland is linear parks and large, open spaces
1/3 of respondents in this category were age 65 and over	2/3 of respondents in this category were age 65 and over

Lived in St. George for Short Period of Time	Lived in St. George at Least Ten Years or More
Likely to use parks more frequently	Twice as likely to say that their primary recreation needs are met through a church
Twice as likely to state that the city doesn't have the park features they're interested in	Twice as likely to use picnic facilities
More likely to use trails	Less likely to participate in activities because of age or disability
First priority for expansion is more trails	First priority for expansion is additional parks
Much more likely to cite "lack of awareness" as a primary reason for not using city programs and facilities	More likely to use the Municipal Pool and Hydrotube
Twice as interested in dog parks	More likely to use the park "closest to home"
Greater interest in preserving open space	



Coordination with Other Plans

City of St. George Parks Master Plan (1994)

This Parks, Recreation, Arts, and Trails Master Plan Update supersedes the 1994 Plan.

2002 City of St. George General Plan

It compliments and updates technical information about parks and recreation contained in the “2002 City of St. George General Plan,” and builds on the visioning and goal-setting contained in the General Plan. The important vision statements that apply to this effort are included below. Goals and objectives, and policy directions contained in the General Plan (2002) are included in the update chapters of this document where they apply.

Open Space Vision: “A city with ample open space, such as along the Virgin and Santa Clara Rivers, along major drainage washes, the Red Cliffs Desert Reserve habitat area, Webb Hill and other environmentally sensitive areas.”

Parks Vision: “Neighborhood parks are conveniently located throughout the City and a hike and bike trail network connects residential areas with major parks using river and wash corridors as well as designated street rights-of-way.”

Future Growth: “A city where growth is well-managed and new development does not exceed the capacity of public facilities and services.”

City of St. George Transportation Master Plan (2006)

Information contained in the Transportation Master Plan compliments the Parks, Recreation, Arts, and Trails Master Plan Update and addresses multiple modes of travel including on-street bicycle lanes, trails along major transportation corridors, sidewalks, and other connections to park and recreation facilities.

St. George Open Space Master Plan (2005-2006)

This plan, prepared by graduate students in Utah State University’s Department of Landscape Architecture and Environmental Planning address an approach to identifying and categorizing open spaces. It identifies future actions for the City of St. George to take in order to implement an open space plan.

Quality of Life Task Force Report (2002)

In 2000, St. George established the Quality of Life Task Force which reported a vision for the City. The Mission Statement in the report states that the goal of the vision is “to create a healthy community wherein each individual and family has access to resources and opportunities in our environment conducive to enhancing the quality of life.” The Task Force recognized the unique local landscape and its contribution to defining major features affecting and enhancing quality of life and healthy lifestyles. It supports efforts to maintain and enhance the kind of recreation opportunities that encourage healthy and active lifestyles that focus largely on the out-of-doors.



Organization of the Document

The 2006 Update of the Park, Recreation, Arts, and Trails Master Plan is organized in chapters that address each of the elements separately. It is understood however, that they are each part of an integrated system providing leisure, arts, and recreational opportunities to the citizens of St. George. Information is obtained from the focus groups, the community-wide survey, the Steering Committee, and the open house meetings.

